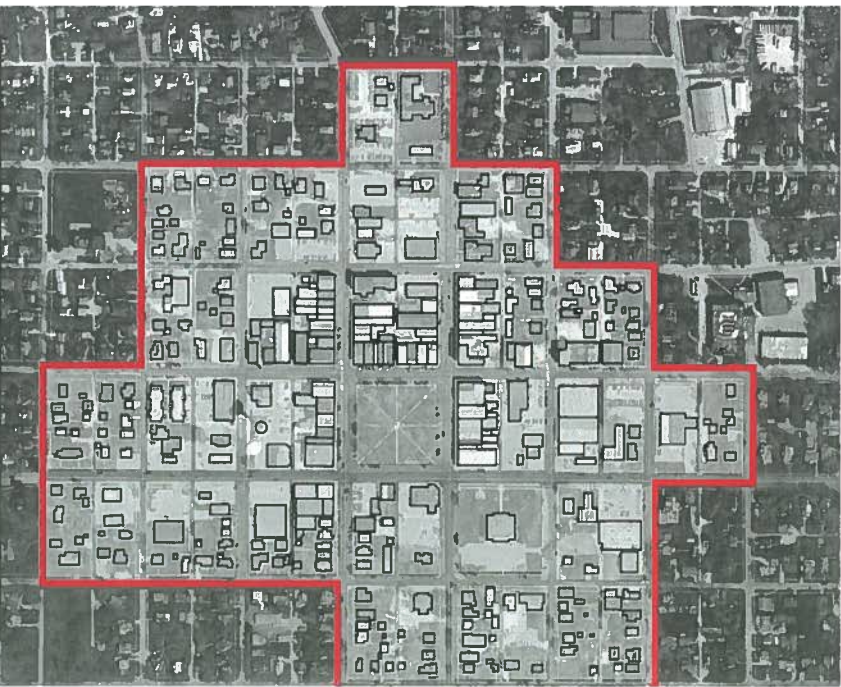


INTRODUCTION TO
Planning & Zoning
for Local Officials
WORKSHOP

MARCH - APRIL 2012

Presented by
IOWA STATE UNIVERSITY EXTENSION
COMMUNITY AND ECONOMIC DEVELOPMENT
with assistance from
Iowa League of Cities
Iowa's Regional Councils of Government
Iowa State Association of Counties
ISU Extension County Offices



IOWA STATE UNIVERSITY
Extension and Outreach

COMMUNITY AND ECONOMIC DEVELOPMENT
2711 South Loop Drive, Suite 4900
Ames, Iowa 50010-8664

WHAT YOU WILL LEARN

Elected officials and citizen-led boards and commissions make up the backbone of the local planning and zoning process. Unfortunately, the issues surrounding land use, and the tools and techniques available to address them, are becoming increasingly complex. At the same time developers, landowners, and residents are increasingly likely to litigate over unfavorable decisions.

The Introduction to Planning and Zoning workshop is designed as a "basic training" for local elected and appointed officials on the land use issues facing them today. Using case scenarios in a highly-interactive format, it will provide participants with an overview of the roles and responsibilities of the planning commission, the board of adjustment, and the elected council and board of supervisors. It also will highlight legal issues frequently faced by local officials, such as variances, special uses, nonconforming uses, spot zoning, hearing procedures, and conflicts of interest. The workshop is intended primarily for local officials new to planning and zoning issues, though it also will serve as a refresher for veteran members.

Beginning in Spring 2010, the Introduction to Planning and Zoning for Local Officials workshops will be offered annually in eight locations across the state. Locations will change from year-to-year so that city officials can attend a location near them at least once every two years.

2012 LOCATIONS

MARCH 20
Okhojoi — Arrowwood Resort & Conference Center

MARCH 21
Clear Lake — Best Western Holiday Lodge

MARCH 28
Burlington — Comfort Inn

MARCH 29
Cedar Rapids — Clarion Hotel

APRIL 3
Decorah — Hotel Winneshiek

APRIL 4
Carroll — Carrollton Inn

APRIL 10
Sioux City — Bev's on the River

APRIL 11
Red Oak — Red Coach Inn

2013 LOCATIONS (tentative)

Quad Cities
Fairfield
Fort Dodge
Des Moines

Dubuque
Waterloo
Council Bluffs
Spenser

REGISTRATION INFORMATION

The Introduction to Planning and Zoning Workshop will be held in eight locations throughout Iowa in March and April 2012.

All programs will begin with registration and a light supper at 5:30 p.m. The program will begin at 6:00 p.m. and conclude by 8:45 p.m.

The registration fee is \$55 per individual. This fee is reduced to \$45 per individual if a city or county registers 5 or more officials to attend. This fee covers supper and the workshop materials.

Registration materials and payment must be received at least two weeks before the scheduled date of the workshop you wish to attend. Registrations will be accepted at the door but no meal will be provided.

Please make checks payable to ISU Extension and send your registration form and payment to *Planning and Zoning Workshops, Iowa State University Extension Community and Economic Development, 2711 S. Loop Drive, Suite 4900, Ames, IA 50010-8664.*

QUESTIONS?

For further information about the Introduction to Planning and Zoning Workshops you may contact any of the following:

Gary Taylor (515) 290-0214
Alan Vandehaar (515) 231-6513
Cindy Stuve (515) 294-5263

... and justice for all
The U.S. Department of Agriculture (USDA) prohibits discrimination in all its programs and activities on the basis of race, color, national origin, age, disability, and where applicable, sex, marital status, familial status, parental status, religion, sexual orientation, genetic information, political beliefs, reprisal, or because all or part of an individual's income is derived from any public assistance program. (Not all prohibited bases apply to all programs.) Persons with disabilities who require alternative means for communication of program information (Braille, large print, audiotape, etc.) should contact USDA's TARGET Center at 202-720-2600 (voice and TDD). To file a complaint of discrimination, write to USDA, Director, Office of Civil Rights, 1400 Independence Avenue SW, Washington, DC 20250-9410, or call 800-795-3272 (voice) or 202-720-6382 (TDD). USDA is an equal opportunity provider and employer.

Issued in furtherance of Cooperative Extension work, Acts of May 8 and June 30, 1914, in cooperation with the U.S. Department of Agriculture, Cathann A. Kress, director, Cooperative Extension Service, Iowa State University of Science and Technology, Ames, Iowa.

SP 371 Revised December 2011

REGISTRATION FORM

INTRODUCTION TO

Planning & Zoning for Local Officials

WORKSHOP

MARCH – APRIL 2012

Complete a registration form for each individual registering for the workshop, or attach a separate sheet with names and all information requested below for others registering.

NAME _____

CITY/COUNTY POSITION _____

ADDRESS _____

CITY, STATE, ZIP _____

PHONE _____

EMAIL You will receive a confirmation email with specific location information and driving directions prior to the scheduled workshop date.

LOCATION Check one

MARCH 20 Okhojoi Decorah

MARCH 21 Clear Lake Carroll

MARCH 28 Burlington Sioux City

MARCH 29 Cedar Rapids Red Oak

REGISTRATION FEE \$55*

* Deduct \$10 per registration if city or county registers 5 or more officials to attend.

Total registration fee enclosed \$ _____

Please make checks payable to ISU Extension and send your registration form and payment to Planning and Zoning Workshops, Iowa State University Extension Community and Economic Development, 2711 S. Loop Drive, Suite 4900, Ames, IA 50010-8664.

To download additional brochures please visit
<http://blogs.extension.iastate.edu/planningBLUZ>